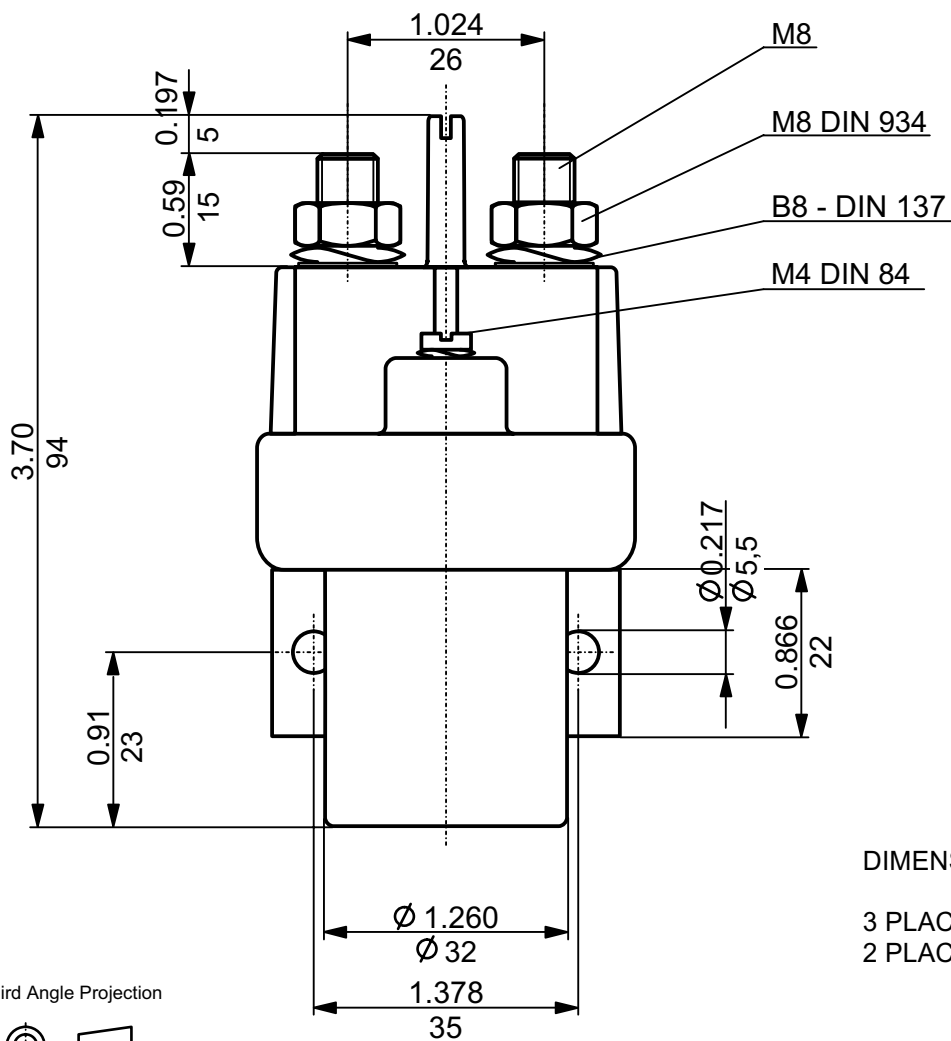
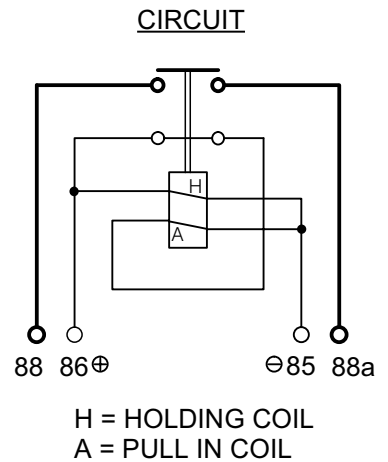
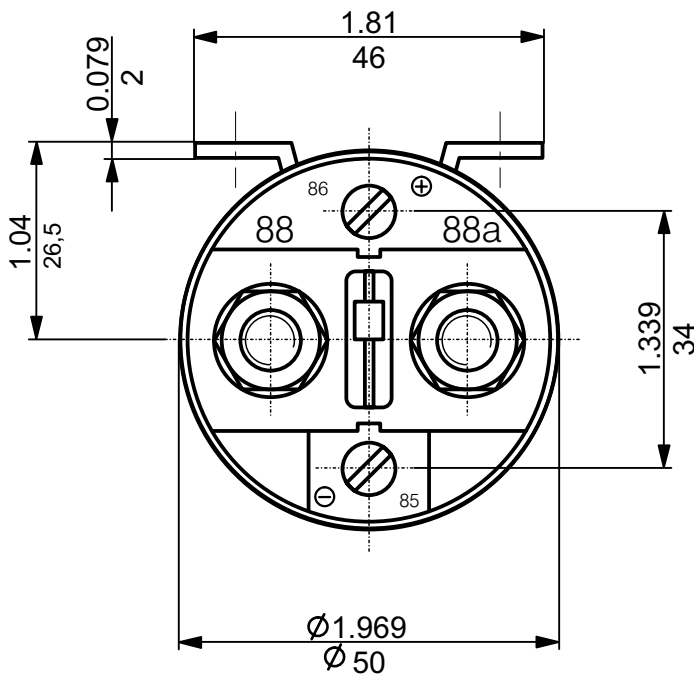


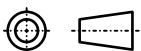
100 AMP. POWER RELAY (28 VDC)
SIDE MOUNTING ENVIRONMENTALLY SEALED



DIMENSIONAL TOLERANCES

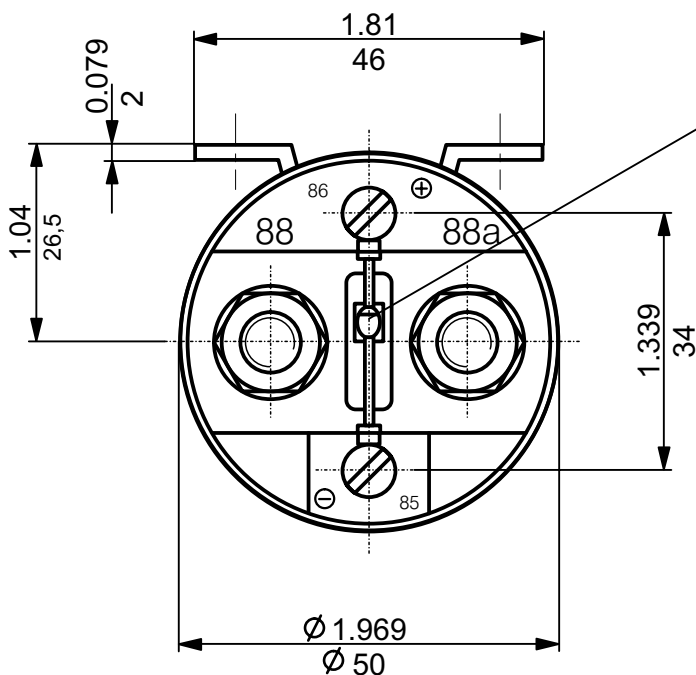
3 PLACE DECIMAL ± 0.010
2 PLACE DECIMAL ± 0.03
ANGULAR $\pm 0^{\circ}30'$

Third Angle Projection



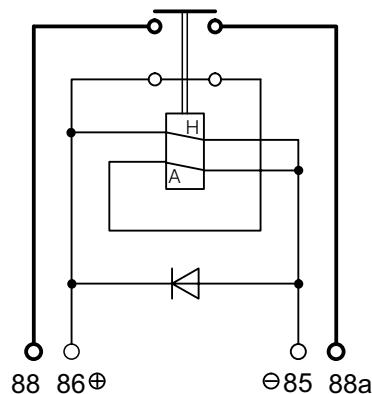
1994	Date	Name	Inch mm	Scale 1:1	 ELEKTROTECHNIK D-72218 Wildberg	Drawing No. \approx Order No.
Design	27.01.	Jask.				26.60.01
Check	27.01.	Grupp	General Tolerances DIN 7168 m ISO 2768			
Appro						NSN: 5945-12-309-6698

100 AMP. POWER RELAY (28 VDC)
SIDE MOUNTING ENVIRONMENTALLY SEALED
SUPPRESSION DIODE

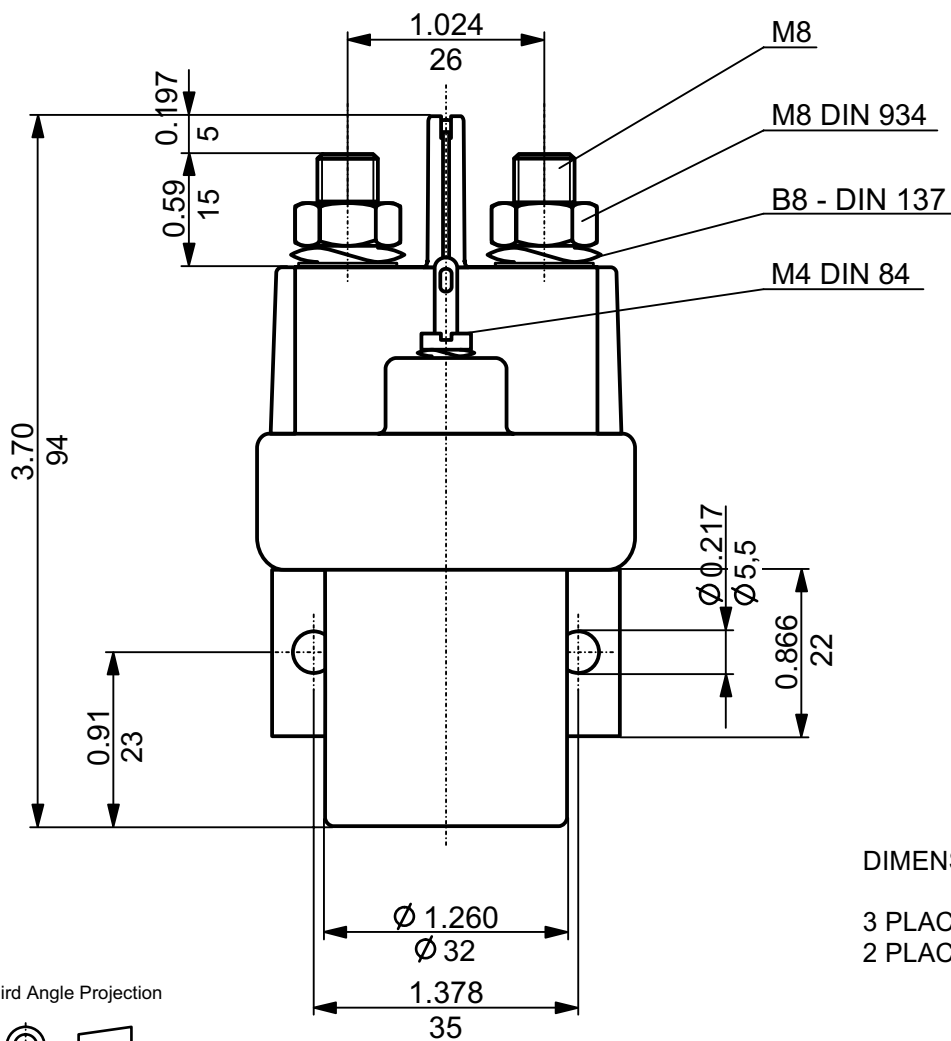


SUPPRESSION DIODE
26.08.50

CIRCUIT



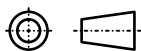
H = HOLDING COIL
A = PULL IN COIL



DIMENSIONAL TOLERANCES

3 PLACE DECIMAL ± 0.010
2 PLACE DECIMAL ± 0.03
ANGULAR $\pm 0^{\circ}30'$

Third Angle Projection



1994	Date	Name	Inch mm	Scale
Design	27.01.	Jask.		1:1
Check	27.01.	Grupp	General Tolerances	
Appro			DIN 7168 m	
			ISO 2768	



Drawing No. \approx Order No.

26.60.05

NSN: 5945-12-178-9031

100 AMP. POWER RELAY (28 VDC)

SIDE MOUNTING ENVIRONMENTALLY SEALED

MEETS THE REQUIREMENTS OF MIL - R - 6106

ENVIRONMENTAL CHARACTERISTICS

TEMPERATUR RANGE -55° C TO +74° C (-67° F TO +165° F)
 MAX. ALTITUDE RATING 50 000 FT
 SEAL IEC PUBLICATION 529; IP 67; 6 FT
 SHOCK G-LEVEL MIL-STD-202, TEST METHOD 213, TEST CONDITION J = 30 G
 VIBRATION MIL-STD-202, TEST METHOD 204, TEST CONDITION C = 10 G
 ACCELERATION 15 G

ELECTRICAL CHARACTERISTICS

MIN. INSULATION RESISTANCE; INITIAL 100 MEGOHMS
 AFTER LIFE OR ENVIRONMENTAL 50 MEGOHMS
 DIELECTRIC WITHSTANDING VOLTAGE SEA-LEVEL 1 MINUTE 1 050 VOLTS
 ALTITUDE 1 MINUTE 500 VOLTS
 MAX. CONTACT DROP INITIAL 0.15 VOLTS
 AFTER LIFE TEST 0.175 VOLTS
 OVERLOAD 800 AMP
 RUPTURE CURRENT 1000 AMP
 DUTY RATING 100 AMP CONTINUOUS

RATED CONTACT LOAD (28 VDC)

RESISTIVE LOAD 50 000 CYCLES WITH 100 AMP
 INDUCTIVE LOAD 10 000 CYCLES WITH 80 AMP
 MOTOR LOAD 50 000 CYCLES WITH 100 AMP
 MECHANICAL LIFE 100 000 CYCLES WITH 25 AMP

OPERATING CHARACTERISTICS

COIL DATA

VOLTAGE RANGE 18 - 32 VDC
 NOMINAL VOLTAGE 28 VDC
 PICK UP VOLTAGE MAX. 18 VDC FULL TEMP. RANGE
 RESISTANCE PULL IN COIL 3.6 OHMS ± 20%
 PULL IN CURRENT MAX. 6 AMP FOR 30 MILLISECONDS
 RESISTANCE HOLDING COIL 145 OHMS ± 10%
 HOLDING CURRENT MAX. 0.25 AMP
 DROP OUT VOLTAGE ≤6 VDC FULL TEMP. RANGE

TIME-MILLISECONDS-MAX.

OPERATE 20
 WITH SUPPRESSION DIODE 80
 RELEASE WITHOUT SUPPRESSION DIODE 15
 BOUNCE 8

WEIGHT 0.44 kg = 0.97 POUND MAX.

WIRE SECTION (AT NOMINAL LOAD) MIN. 25 mm² / 0.039 sq. in. / AWG 3

SUBJECT TO CHANGE

1994	Date	Name	↔ Inch mm	Scale	 ELEKTROTECHNIK D-72218 Wildberg	Drawing No. ≙ Order No. 26.60.01 26.60.05
Design	27.01.	Jask.	General Tolerances DIN 7168 m ISO 2768			
Check	27.01.	Grupp				
Appro						